

AirStep[®]

flexible flooring

WITH
Scotchgard
PROTECTOR 3M



Congoleum[®]

LIFE *is about* MOMENTS

*L*ife is messy, but AirStep®

by Congoleum is easy to maintain and live with so you can get back to enjoying life's moments.



Live the AirStep Life.

On Trend

Our design experts meticulously seek out cutting edge trends then distill and adapt them to create the most stylish flexible flooring available.

Practical

A fully-sealed floor is a clean floor. Many flooring choices have seams that allow water, dirt and bacteria to seep under the floor causing it to show wear and harbor germs, but AirStep is a single solid sheet making a practically impermeable surface that installs over many varied subfloors.

Easy to Live With

AirStep with Scotchgard™ Protector repels dirt and mess for guaranteed easy cleanability. Added silver protection resists microorganisms on the surface of the floor.

Innovative

AirStep flexible floors are proudly **manufactured from domestically-sourced materials in the USA** under stringent quality controls. Our products meet or exceed low-emission standards for better indoor air quality as certified by FloorScore®.



Table of Contents

- 2 Live the AirStep Life
- 3 - 8 AirStep Advantage BEST
- 9 - 18 AirStep Evolution BETTER
- 19 - 26 AirStep Plus GOOD

AirStep Advantage



- Our most fashion-forward, luxurious product
- Warmest and most cushioned choice underfoot
- Extra thick wear layer resists rips, tears and gouging
- Infused silver supports natural antibacterial protection on the surface of the flooring
- Dimensional printing creates extremely realistic and upscale visuals
- Lifetime residential warranty



88063 Campfire



88062 Counting Stars

REMINISCE



88060 First Snowfall

88061 Catching Fireflies

88062 Counting Stars

88063 Campfire



88011, Swing Set

PLAYTIME



88011 Swing Set



88015 Tree House

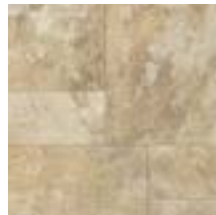


88001, Warm Croissant

SAVOR



88000 Clam Chowder



88001 Warm Croissant



88002 Cookies n' Cream

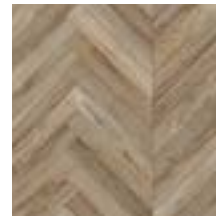


88005 Sushi



88054, Porpoise

WONDER



88050 Dandelion Puff



88054 Porpoise



88201, Horizon



88200, Firelight

WESTPORT



88200 Firelight



88201 Horizon

AirStep Evolution®



Performance meets modern design: realistic visuals in a durable construction that withstands active lifestyles

- Thick, easy to clean wear surface that looks beautiful for years
- UltraTec® backing for easy installation
- Infused silver supports natural antibacterial protection on the surface of the flooring
- 50-year residential warranty

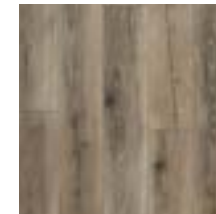


72200, Light Shadows

OAKSTAND



72200 Light Shadows

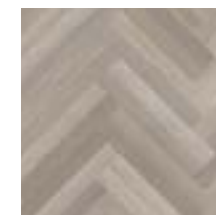


72201 Wicker

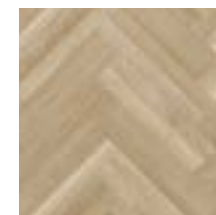


72300, Cloud Cover

FANFARE



72300 Cloud Cover



72301 French Toast



72005, Cashmere

TERRACE



72000 Corn Silk



72001 Desert Sunset



72002 Autumn Glow



72004 Iced Mocha



72005 Cashmere



72141, Desert View

CASA NOVA



72141 Desert View



72182, Split Rail Fence

VINTAGE BARNWOOD



72181 Hay Loft



72182 Split Rail Fence



72132, Sierra Foothills

ACACIA



72130 Barley



72131 Millstone Gray



72132 Sierra Foothills

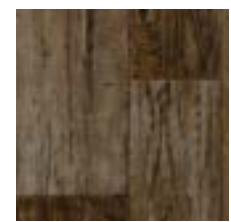


72013, Wagon Wheel

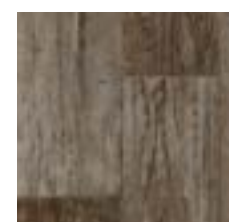
COLONIAL PLANK



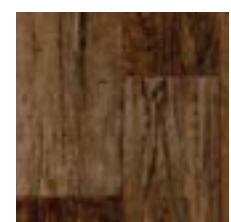
72010 Dark Khaki



72013 Wagon Wheel



72014 Barn Owl



72019 Harvest Moon

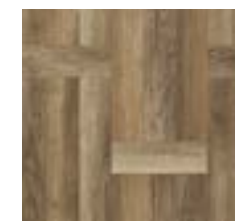


72400, Coastal Path

OUTER BANKS



72400 Coastal Path



72401 Baffin Island



72120, Winter Sky

ROCKPORT



72120 Winter Sky



72500, Calm

COURTYARD



72500 Calm

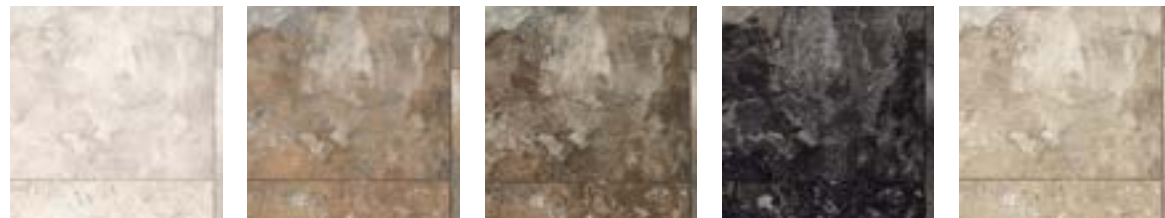


72054, Enchanted Evening



72090, White Sand

GRAND CANYON



72050 Antique Lace

72051 Golden Gate

72053 Safari

72054 Enchanted Evening

72055 Camelback

TRAVERSTONE



72090 White Sand

72091 Biscayne Shore



72080, Pacific Crest Trail



72105, Lantern Smoke

PATHWAYS



72080 Pacific Crest Trail



72081 Finger Lakes Trail



72084 Glacier Trail

FOREST VALLEY



72105 Lantern Smoke

AirStep Plus[®]

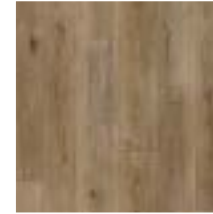


Value-priced flexible flooring that offers classic beauty and functionality.

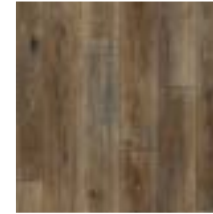
- Durable wear layer and easy installation
- Infused silver supports natural antibacterial protection on the surface of the flooring
- 20-year residential warranty



CANYON BOWER



58180 Natural

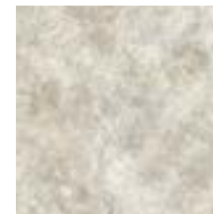


58181 Farmstead

SATIN CLOUD



58011 Blush



58013 Silver Satin



58181, Farmstead

58180, Natural



58005, Chestnut

WOODLAND



58005 Chestnut



58006 Goldenrod



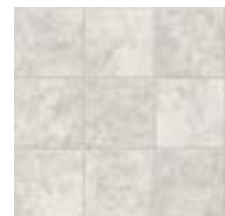
58160, Stockade

JAMESTOWN PLANK



58160 Stockade

OXFORD SQUARE



58100 London Fog



58141, Borderline

LINEA



58140 Frost Line



58141 Borderline



58142 Shoreline



58020, Oasis Beige

STARLIGHT



58020 Oasis Beige



58021 Sunstone



58027 Full Moon

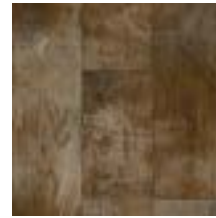


58132, Figurehead

TOPSIDE



58130 Trade Winds



58132 Figurehead



58300, Sueded Gray

TUSCAN VILLA



58300 Sueded Gray



58290, Sundance

BEACHSIDE PLANK

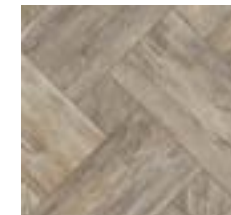


58290 Sundance



58400, Russet Gray

CHATHAM



58400 Russet Gray

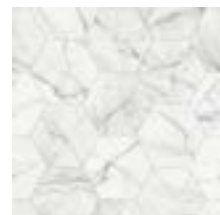


58500 Icy Mist



58190, Lodge

THRONE ROOM



58500 Icy Mist



58501 November Rain

THIN LINE



58190 Lodge



58191 Hushed Hue



58501 November Rain

Congoleum[®]

www.congoleum.com

© 2022 Congoleum P22-0993
Printed in USA M60240123S